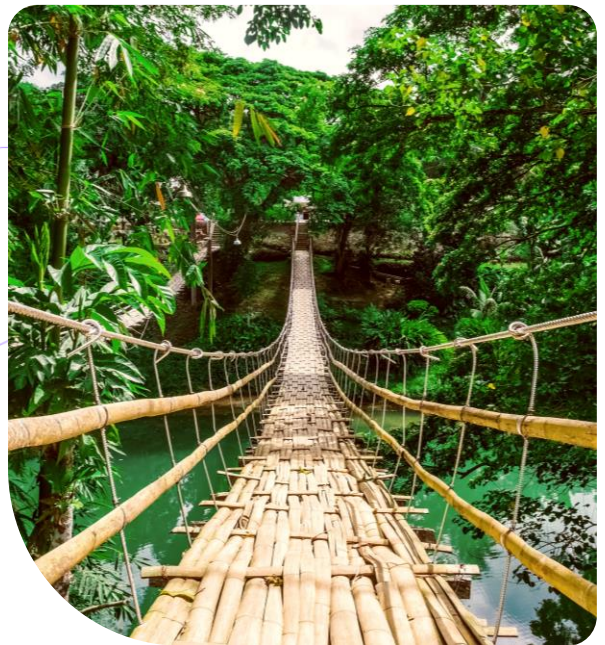




# Corporate Sustainability Reporting Directive (CSRD)

## Beyond compliance, fostering a competitive edge

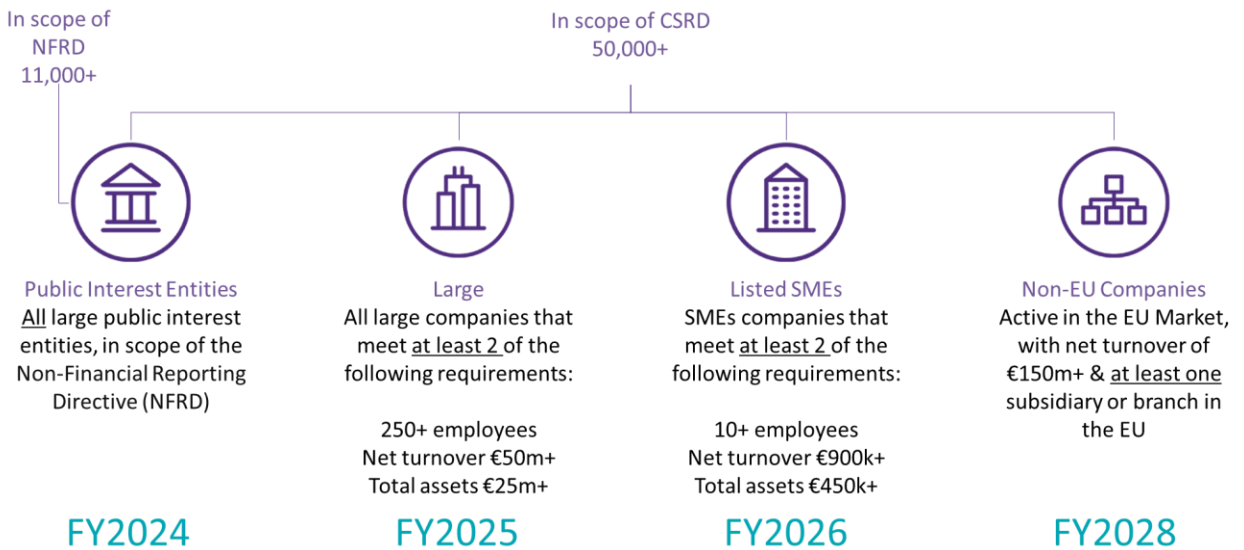
Starting from the beginning of 2024, the CSRD is phased in, mandating disclosures from in-scope companies regarding ESG issues, as well as the impact of their business on people and the environment. This directive significantly transforms corporate sustainability reporting by imposing specific disclosure formats and reporting standards. Notably, non-EU corporate groups must assess whether they fall under CSRD requirements, as disclosure is mandatory at a consolidated level, encompassing both EU and non-EU subsidiaries of non-EU groups.



## What new elements does CSRD introduce?



# Are you in scope?



## How we can help your business

- Diagnostic and double materiality assessment (DMA)
- Sustainability strategy, governance, metrics & targets, data capture & structuring
- CSRD reporting & audit-readiness support
- Awareness and upskilling trainings

Our commitment is to be a trusted partner in your pursuit of operational excellence. Let's embark on this journey together.



**Fani XYLOURI**

Head of Sustainability & ESG Services  
M +352 621 483 371  
E fani.xyLOURI@lu.gt.com



**Andia SHTEPANI**

Partner, Head of Advisory  
M +352 621 171 353  
E andia.shtepani@lu.gt.com



**Andrada NASTASE**

Expert, Sustainability & ESG Services  
M +352 45 37 78 379  
E andrada.nastase@lu.gt.com



### About Grant Thornton

Grant Thornton is one of the world's leading organisations of independent assurance, tax and advisory firms. These firms help dynamic organisations unlock their potential for growth by providing meaningful, looking forward advice. More than 73,000 people across over 150 countries, are focused on making a difference to clients, colleagues and the communities in which we live and work.

© 2024 Grant Thornton Luxembourg. All rights reserved.

"Grant Thornton" refers to the brand under which the Grant Thornton member firms provide assurance, tax and advisory services to their clients and/or refers to one or more member firms, as the context requires. Grant Thornton Luxembourg is a member firm of Grant Thornton International Ltd (GTIL). GTIL and the member firms are not a worldwide partnership. GTIL and each member firm is a separate legal entity. Services are delivered by the member firms. GTIL does not provide services to clients. GTIL and its member firms are not agents of, and do not obligate, one another and are not liable for one another's acts or omissions.